

WHAT'S NEW

Project Portal is an intuitive environmental data software application developed by the data scientists at ddms. Use Project Portal for end-to-end project work, from in-depth data to project documents, maps, budgets, schedules and more. ([Learn more here.](#))

Here's a quick look at what we added in the last year—and a taste of what's coming.

RULES ENGINE

Create and manage rules

Automatically monitor environmental data and have the system take action.

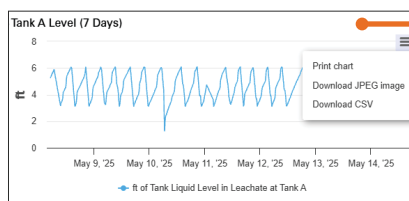
- Example: Benzene concentrations at select groundwater wells exceeds 5 ug/L
- Example: Let me know when there have been no results in last 30 days

Actions:

- Send email notification
- Track work with Workflow

Manage your own rules

- See a summary of all rules
- Turn rules on/off as needed
- Create new rules



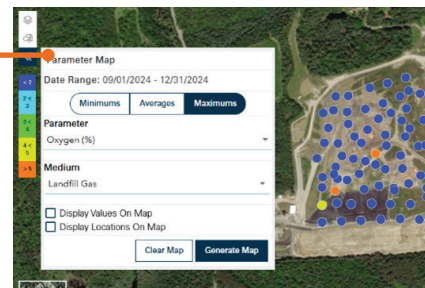
HIGH FREQUENCY DATA

New Widgets for High-Frequency Data

- Add dashboard widgets for your continuous monitoring data
- Download data from Widget

PARAMETER MAPS

- Visualize your environmental data
- Perform queries and see summaries represented as colored ranges



Exceedances - Last 30 Days	
Project 1	101
Project 2	80
Project 3	47
Project 4	36

NEW PORTFOLIO TOOLS

See all your projects at a glance

- Status
- Key statistics
- Workflows and tasks

MORE NEW ITEMS

- New format to load data – easily enter more types of data
- New integrated submit data module – allow users to enter data from their project
- New expanded reporting capabilities

WHAT'S COMING ?

We're planning several enhancements in the next year:

Platform Investments

- Security and reliability infrastructure enhancements

Roadmap Items

- AI search enhancements
- Multi-factor authentication
- Updated data ingestion & API